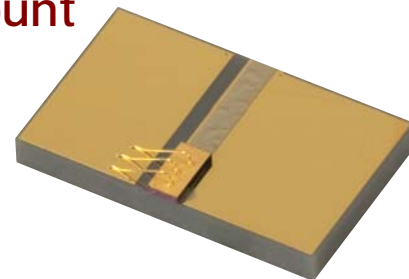


2000 nm Fabry-Perot Laser Chip on Submount



FPL2000C

Description

The FPL2000 series laser is a high power Fabry-Perot Laser diode (FPL) based on state-of-the-art, quantum-well epitaxial layer growth and reliable ridge waveguide structure. These lasers are mounted with the p-side of the diode facing down, which enables better thermal dissipation and high-power operation.

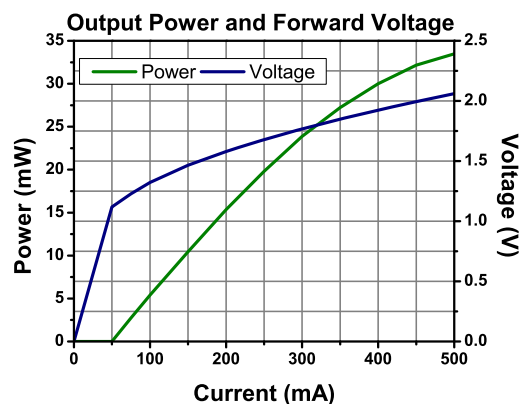
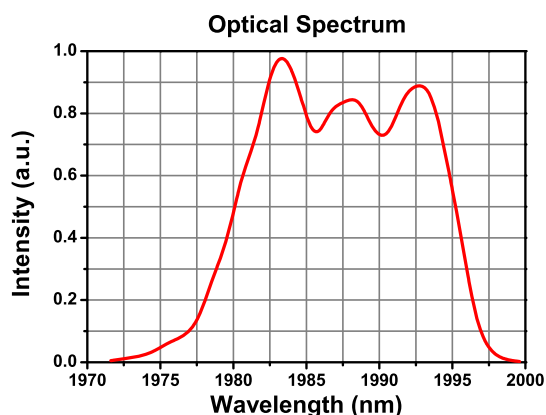
Specifications

CW; $T_{\text{CHIP}} = 25^{\circ}\text{C}$

	FPL2000C			
	Symbol	Min	Typical	Max
Center Wavelength	λ_C	1980 nm	2000 nm	2020 nm
Operating Current	I_{OP}	-	400 mA	500 mA
Optical Power	P_{OUT}	25 mW	30 mW	-
Spectral Bandwidth (rms)	$\Delta\lambda$	-	15 nm	-
Threshold Current	I_{TH}	-	55 mA	80 mA
Forward Voltage @ I_{OP}	V_F	-	2.0 V	2.5 V



Performance Plots



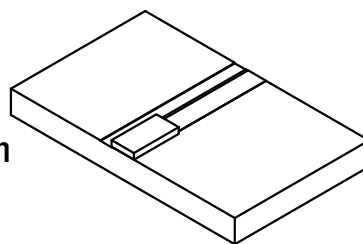
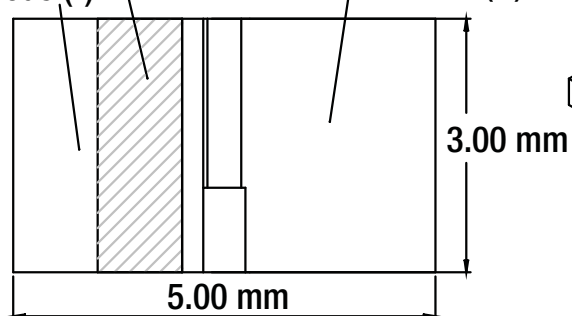
Drawings

Top View

Wire Bond Keep Out

Cathode (-)

Anode (+)



Front View

